

Electro-Hydraulic Gas Valves



Features

- Closed position indicator
- Approved to EN161
- Filter fitted as standard

Specification

Operating voltage	240Vac, 50/60Hz, -15 / +10%
Operating pressure	200 mbar
Opening speed:	
1 1/2" to 4"	10 Seconds max.
6"	30 Seconds max.
Closure time	Max 1 second
Protection	IP54
Ambient temp.	-15 to +60°C
Media temp.	-15 to +60°C
Body material	Die cast aluminium
Media:	
	Non-corrosive gases, air or oil (up to 200s Redwood No.1)
	Combustible gases, families 1 (town gas), 2 (natural gas), and 3 (L.P.G)
Pipe work conns.	Screwed BSP female or flanged to PN16
Power consumption:	
Opening	200VA
Fully open	18VA
Switch rating	250Vac or 30Vdc, 5(2)A
Approvals	EN161, Class A group 2 construction CE certificated
Country of origin	UK

Product Codes

Screwed valves

VS-PS6683

1 1/2" BSP 230Vac coil with CPI

VS-PS6684

2" BSP 230Vac coil with CPI

VS-PS6685

2 1/2" BSP 230Vac coil with CPI

VS-PS6686

3" BSP 230Vac coil with CPI

Flanged valves

VS-PS6687F

4" Gas valve 230Vac coil with CPI

VS-PS6689F

6" Gas valve 230Vac coil with CPI

Accessory

VS-PS-MRS

Manual reset switch

Technical Overview

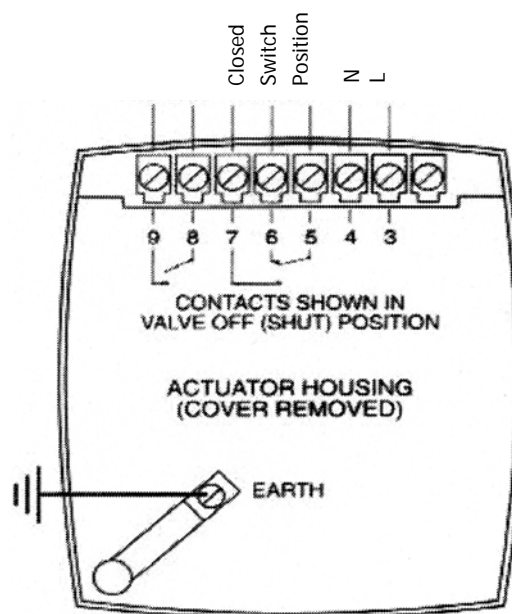
The VS-PS range of Class 'A' two port, two position gas oil-filled hydraulic valves for use in securing, limiting, shutting off and releasing gas supplies to atmospheric boilers, gas burners and similar equipment.

VS - PS valves are supplied with a closed position switch fitted as standard.

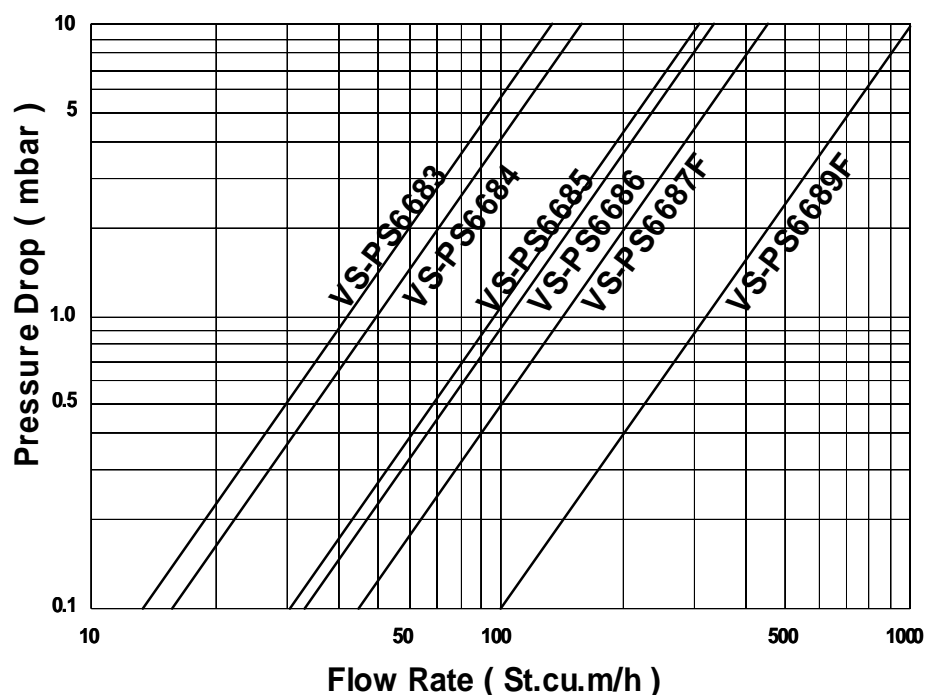
Mount with coil between vertical and horizontal, above the valve body.

The unit is supplied as standard with auto-reset. A manual reset option is available.

Connections

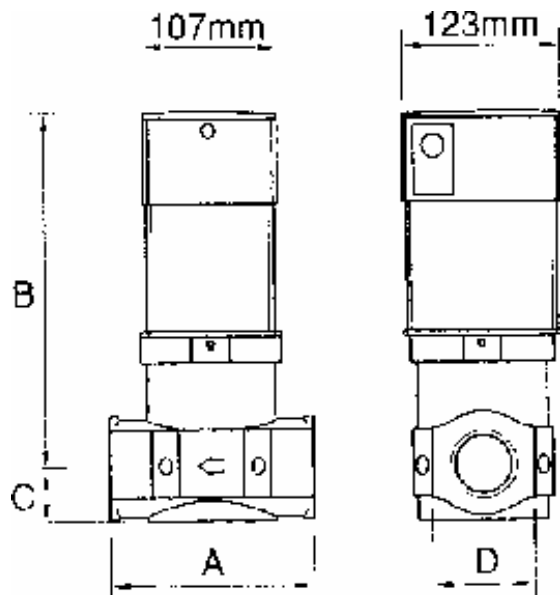


Pressure Table

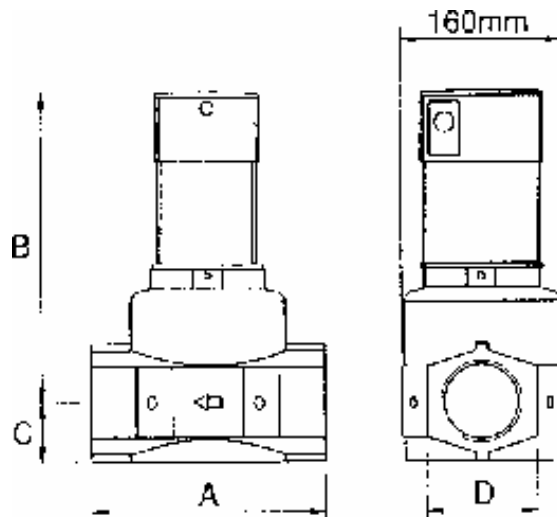


Dimensions

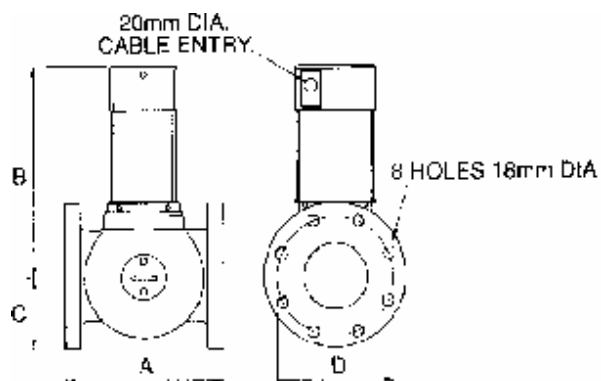
VS-PS6683 & VS-PS6684:



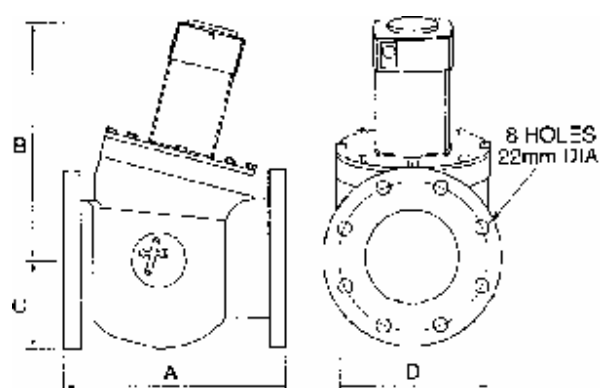
VS-PS6685 & VS-PS6686:



VS-PS6687F:



VS-PS6689F:



Part code	Conns flange	Screw diam.	Orriface	VA	A	B	C	D	kg
VS-PS6683	1½"	Screw	50	18	160	280	40	79	5
VS-PS6684	2"	Screw	50	18	160	280	40	79	4.6
VS-PS6685	2½"	Screw	76	18	235	308	58	110	7.4
VS-PS6686	3"	Screw	76	18	235	308	58	110	7
VS-PS6687F	4"	Flanged	96	18	248	347	101	180	29.5
VS-PS6689F	6"	Flanged	150	18	356	410	145	240	60